

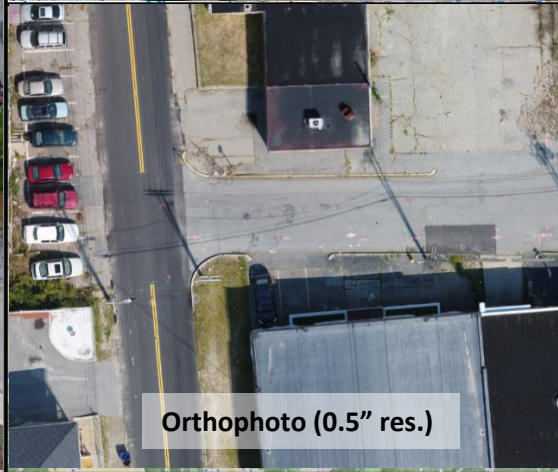
# Sardelli Survey, LLC & Aerial Services



3D Point Cloud (X, Y, Z)



Feature Extraction (CAD)



Orthophoto (0.5" res.)

## Level of Detail for a Private Drone Flight

### LIMITING FACTORS TO CONSIDER

(Importance of Object, Map Scale & Cost/Time)

#### IMPORTANCE OF OBJECT

If something specifically needs to be observed, then this would be the first consideration. This can be several things, such as inventory (number of objects), text (ability to read text on an object), or quality (being able to observe certain details of an object). The scale and cost will be determined by the need to see an object.

#### MAP SCALE

Looking to use this data for mapping and design purposes? Map Scale has a direct relationship to the proximity of the sensor and object being mapped. We can achieve mapping level scale for various projects types, such as Existing Conditions, Site Plan Improvements or Architectural renderings. The cost and importance will be determined by the map scale being achieved.

#### COST/TIME

If your project has a hard deadline and budget, please let us know and we will do our best to help determine both scale and importance to fit that need. Drones offer significant savings compared to conventional surveying methods by reducing field time.

## DRONE MAPPING TECHNOLOGY THAT SEAMLESSLY INTEGRATES INTO YOUR CURRENT WORKFLOWS

Sardelli Survey, LLC can provide High resolution imagery and mapping services for your next land planning project. Our FAA certified Remote Pilots use the latest in Drone Technology & Imagery to give you a new perspective of the land. It's a great tool for developers, Land Surveyors, Engineers or anyone needing high resolution imagery of a properties features.

### FLIGHT REQUIREMENTS:

- FAA airspace approval
- NO precipitation
- LESS THAN 20 MPH winds
- VISIBILITY of project area
- NOT above crowds of people

#### Map Scale @ Altitude:

- 1"=20' @ 60' Above Ground Level
- 1"=40' @ 120' Above Ground Level
- 1"=100' @ 300' Above Ground Level

*\*The necessary scale will determine cost/time required to photograph the area of concern.*



P.O. Box 1017  
Charlestown, RI 02813

(401)213-6266 Office  
(401)837-3364 Cell

[jamie@sardellisurvey.com](mailto:jamie@sardellisurvey.com)